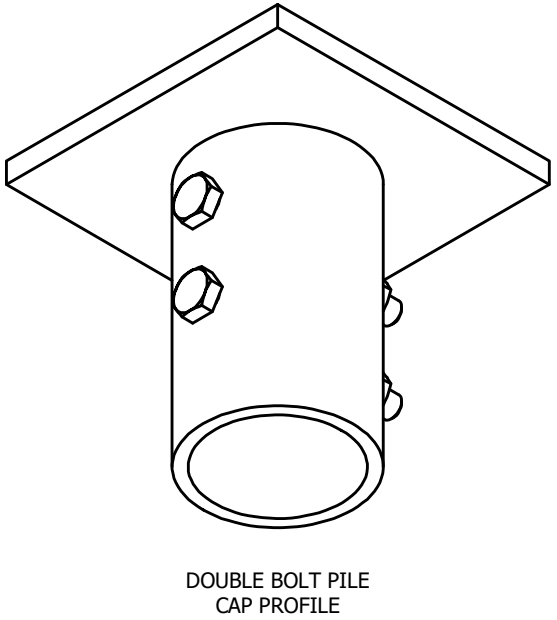
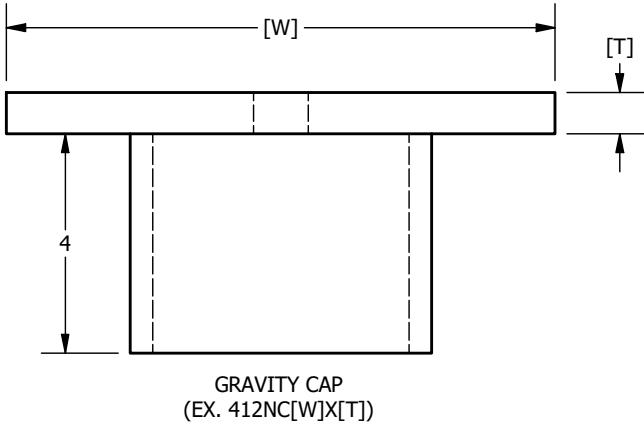
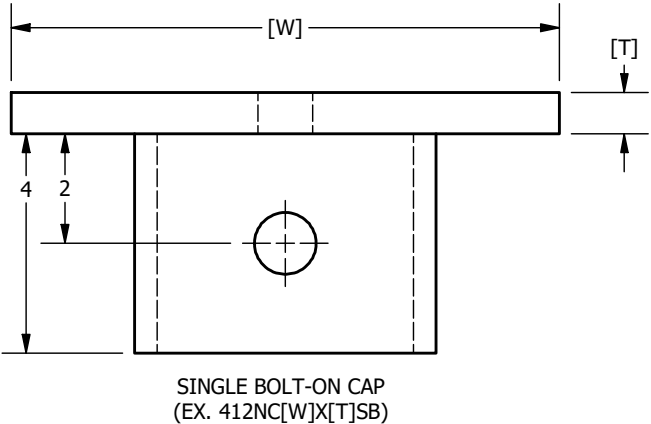
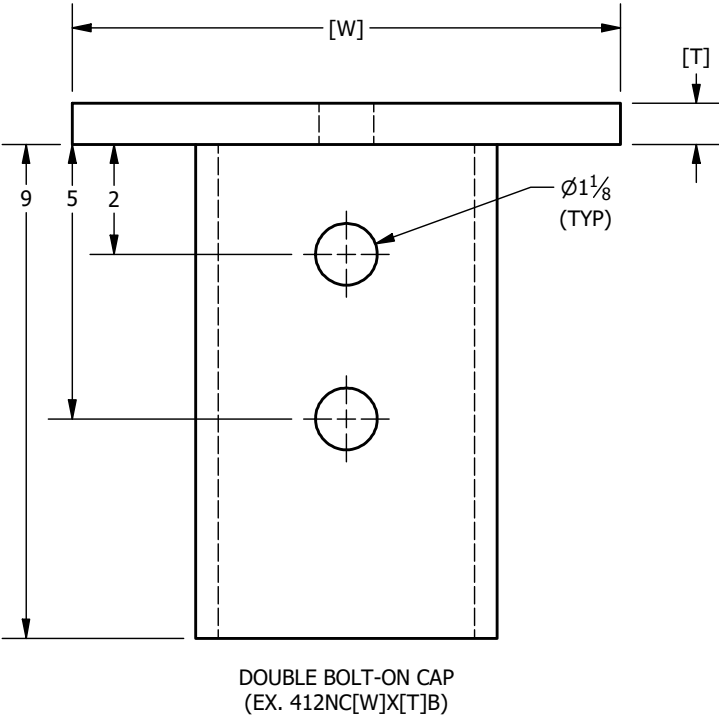


NEW CONSTRUCTION CAPS FOR 4 1/2" O.D. PILE SHAFTS



NOTES:

1. SLEEVE TO MEET OR EXCEED 80 KSI.
2. PLATE STEEL TO MEET OR EXCEED REQUIREMENTS OF ATSM A572, GRADE 50.
3. CAP SLEEVE TO FIT OVER 4 1/2" O.D. PILE SHAFT.
4. STANDARD SQUARE PLATE WIDTHS RANGE FROM 8" TO 12". STANDARD PLATE THICKNESS IS 1/2" OR 3/4".
5. ALL WELDING TO BE PERFORMED BY CERTIFIED WELDOR IN ACCORDANCE WITH AWS D1.1 STRUCTURAL WELDING CODE - STEEL.
6. BARE STEEL IS STANDARD. GALVANIZING IS AVAILABLE IF REQUIRED.
7. (1) OR (2) 1" DIAMETER X 7" LONG PLAIN FINISH HEX BOLT ASTM A325 AND (1) OR (2) 1" PLAIN FINISH HEAVY HEX NUT ASTM A194 (GRADE 8).

IDEAL PART # ABBREVIATIONS:

412 = PILE SHAFT DIAMETER
NC = NEW CONSTRUCTION
[W] = PLATE WIDTH (EX. 10" = 10)
X = X (SEPARATES PLATE WIDTH AND PLATE THICKNESS)
[T] = PLATE THICKNESS (EX. 3/4" = 34)
SB = SINGLE BOLTED
B = DOUBLE BOLTED
G = GALVANIZED

DRAWN AP	4/16/2020			PROPRIETARY AND CONFIDENTIAL THE INFORMATION CONTAINED IN THIS DRAWING IS THE SOLE PROPERTY OF IDEAL MANUFACTURING, INC. ANY REPRODUCTION IN PART OR AS A WHOLE WITHOUT WRITTEN PERMISSION OF IDEAL MANUFACTURING, INC. IS PROHIBITED.	
CHECKED LRS	4/16/2020				
IDEAL MANUFACTURING, INC. 999 PICTURE PARKWAY WEBSTER, NY 14580 800-789-4810 WWW.IDL-GRP.COM		SIZE B	DWG NO 412NC	REV 0	SHEET 1 OF 1
NOT TO SCALE ALL UNITS IN INCHES U.N.O.					